

PROIZVOD: RAX-MULTI

DALJINSKE KOMANDE – RISIVER (Rx)

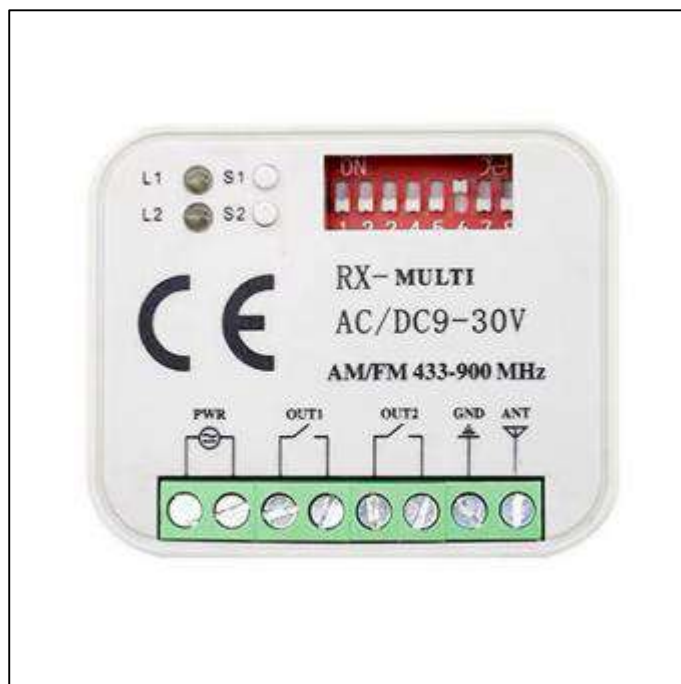
NIŽE U ORIGINALU

RX MULTI 300-900MHZ

Operating Voltage: 12V/24VDC
Working frequency: Default 315MHz, optional 433MHz
Encoding type: Rolling code, fixed code, learning code
RX MULTI 300-900MHZ Aprimatic TR2 TR4 TM4 Rolling code Remote control receiver switch

Advantages

Remote control selection: multi-frequency reception, compatible with domestic and foreign remote controls, using 8-bit dial switch, users can choose different brands of remote control channels.
Learning remote control: The multi-frequency controller has two independent output channels, and each channel has independent learning buttons S1 and S2.



Way of working

- How to go into remotes and erase all remote inputs for one or more remotes
- (1) First, choose the correct remote control brand to enter through the dial switch;
 - (2) Press any learning button, the LED turns on. Press the button on the remote control, the LED flashes 4 times, this button enters R-Multi successfully.
 - (3) Repeat step 2 for the other button. 2 channels work on the same.

Erase all data from the memory card

- (1) Press and hold the learn button, the LED starts to light up.
- (2) Keep pressing the button until the LED light turns off. All data on the memory card is erased.

Operating Voltage	12V/24VDC
Working frequency	Default 315MHz, optional 433MHz
Encoding type	Rolling code, fixed code, learning code
Receiver size	55*45*10mm
Receiving distance	200 meters (open ground)

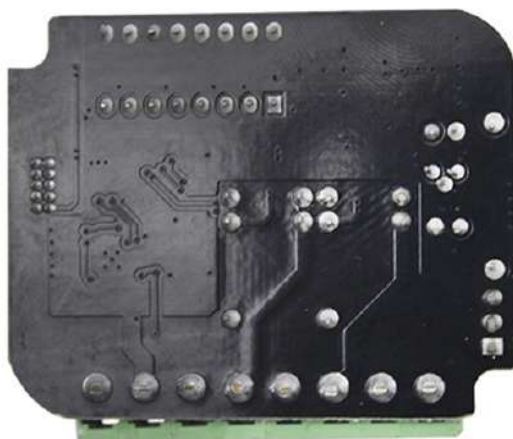
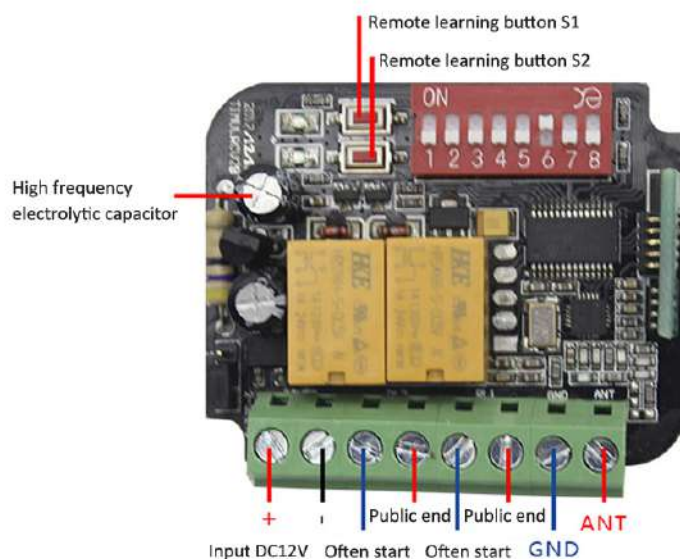


+381 11 355 7599
+381 63 598 017
office@aspekt.rs

Application Scenario



Internal circuit board



+381 11 355 7599
+381 63 598 017
office@aspekt.rs