

# M-Bio

Portable Fingerprint and RFID Time & Attendance Terminal



Wi-Fi



Cloud



Battery



125 KHz EM,  
13.56 MHz MiFARE



Bluetooth










M-bio is a portable fingerprint and RFID Time & Attendance terminal featuring Anviz next generation AFOS touch active fingerprint sensor and rechargeable Li-ion Battery. Standard with Wi-Fi and Bluetooth function, supports CrossChex Cloud and CrossChex Mobile APP. Meanwhile, the M-bio based on embedded Linux system platform has internal Web Server to self-management of the device.

# M-Bio

## Portable Fingerprint and RFID Time & Attendance Terminal

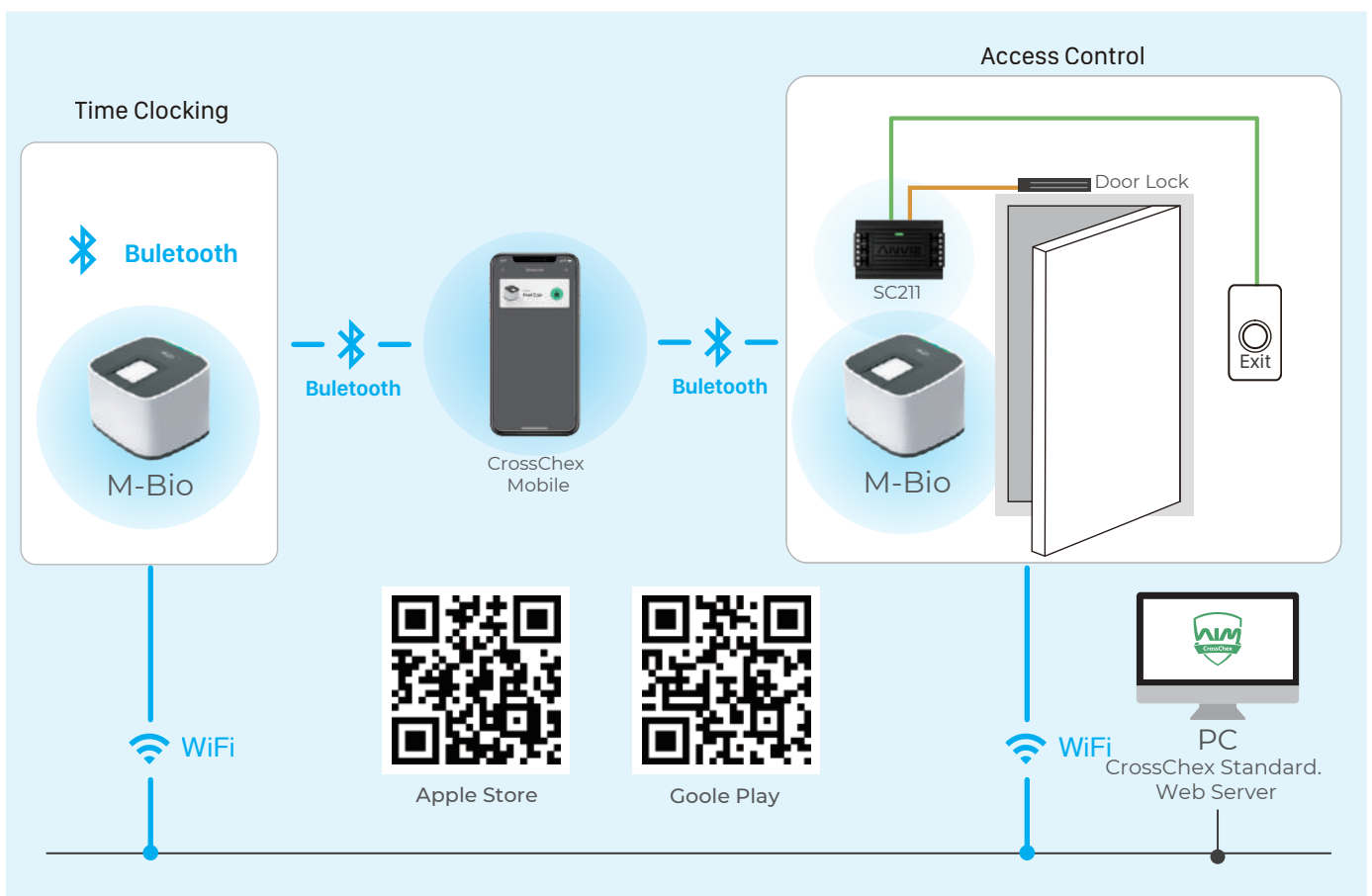
### Features

- 
**Cloud Application**  
 The M-bio just connect to the internet to enjoy unlimited cloud services from CrossChex Cloud Application.
- 
**Contactless Mobile APP**  
 The Bluetooth communication with CrossChex Mobile APP to contactless personnel verification and device management.
- 
**Portable Application**  
 Compact design with 1.0-inch OLED display and rechargeable Li-ion Battery ensuring up 4 hours working.
- 
**Standalone Internal Web Server**  
 The internal web Server ensure the device self-management and easily using.
- 
**The New generation AFOS Fingerprint Sensor**  
 The New generation AFOS 518 dark background fingerprint sensors improve 70% fingerprint identification efficiency and reduce capture error rate in various environments.
- 
**High Speed CPU**  
 The New 1.0 Ghz high speed processor ensure the 1:3000 comparison time less than 0.5 seconds.
- 
**EM&Mifare 2 in 1 RFID Card Module**  
 The EM&Mifare 2 in 1 RFID Card module is compatible with mostly RFID cards' standards.

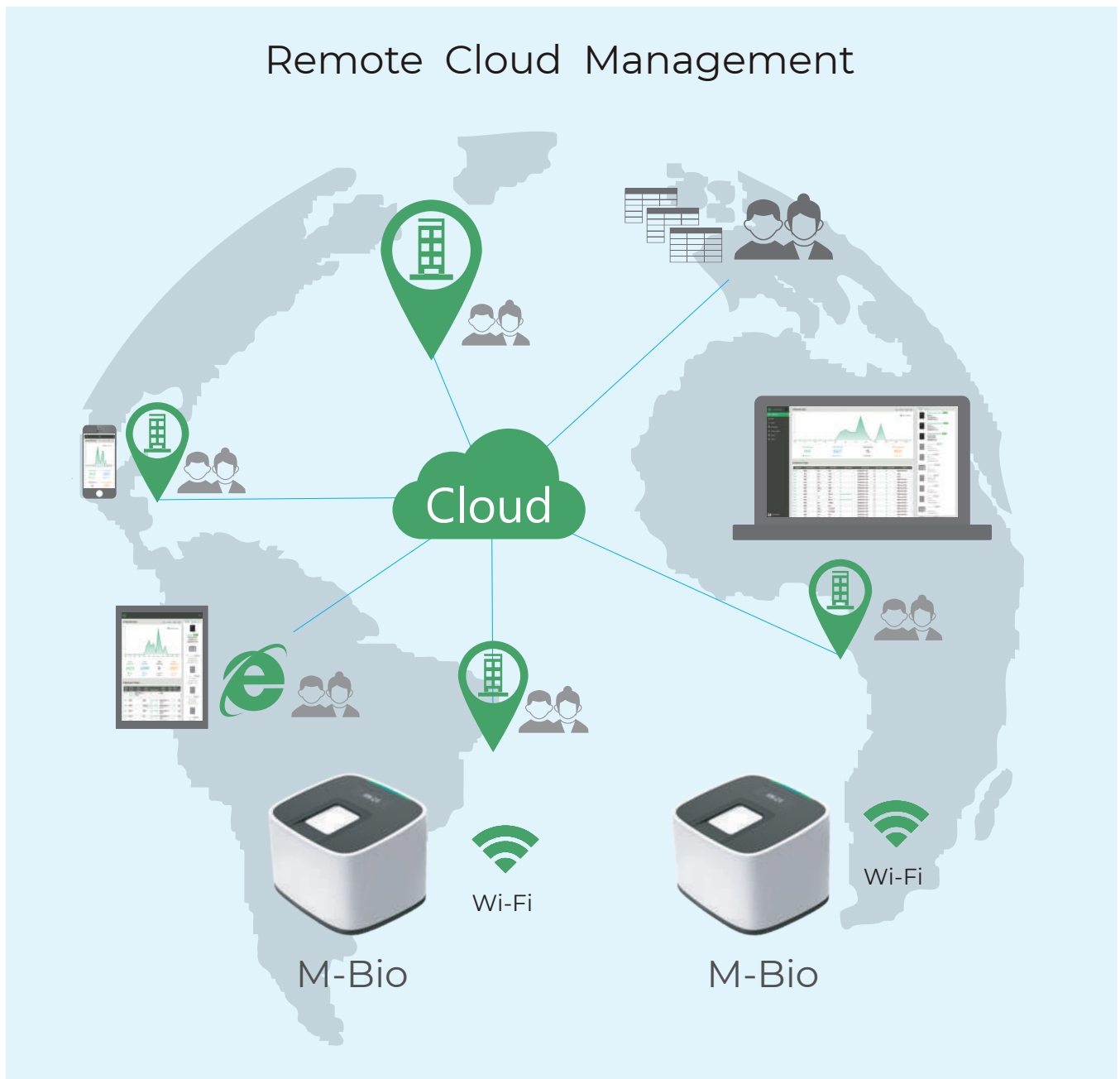
### Key Specifications

CPU	1.0GHz
User Capacity	3,000
Fingerprint Capacity	3,000
Record	100,000
Identification Mode	Fingerprint, Card
Identification Speed	<0.5s (1:3000)
Communication	WiFi, Bluetooth
Web Server	Support
RFID Card	EM&Mifare 2 in 1
Card Reading Distance	2 ~ 5cm(0.79 ~ 1.99")
Battery	600mAh up 4 hours working
Power	DC5V Power over USB
Operating Temperature	-25°C(-13°F) to 45°C(-113°F)
Operating Humidity	10% to 90%

### System Configurations



## System Configurations



## CrossChex Cloud Server link

Worldwide Server: <https://us.CrossChexcloud.com/>

Asia-Pacific Server: <https://ap.CrossChexcloud.com/>



### Anviz Global Inc.

41656 Christy Street Fremont, Fremont, CA, 94538

Tel: 1-510-573-6552 | Toll-free: 1-855-268-4948 | [sales@anziv.com](mailto:sales@anziv.com) | [www.anviz.com](http://www.anviz.com)

©2021 Anviz Global Inc. Anviz and identifying product names and numbers herein are registered trademarks of Anviz Global Inc. All non-Anviz brands and product names are trademarks or registered trademarks of their respective companies. Product appearance, build status and/or specifications are subject to change without notice.